

**Class Overview Slideshow**

# ADVANCED PHOTOGRAPHY

Mr. Brady

LOCKPORT TOWNSHIP HIGH SCHOOL  
**Advanced Photography**

This course will serve as a continuation of both film and digital photography. Techniques will be explored with an emphasis on broadening a student's technical, compositional, and aesthetic skills in photography. Experimental and advanced darkroom processes will be joined with advanced digital editing techniques. Students who are interested in a career in photography are highly encouraged to take this course. A basic film and digital camera will be used along with higher end cameras.

## Student Expectations

1. Attend classes regularly with proper materials and attire. Good attendance is required to do well.
2. Follow classroom Rules and Procedures. (see list below)
3. Pay attention and listen when I go over instructions and demo steps for projects.
4. When you need help please ask me, or another student for help. Don't get a poor grade because you won't self-advocate (speak up for yourself.)
5. Please don't expect me to do your work for you. I will be more than happy to help after you try first and have been having difficulty. Please use the resources on our class website, and be able to tell what step you are stuck on.
6. Use the class website to help complete your assignments.
7. Put your name and class period on everything you turn in.
8. If you are absent, it is your responsibility to find out what we covered and when you can make it up. Always check Google Classroom for information on projects we worked on the day(s) you were absent. The computer lab and darkroom will be open after school the days that Art Club meets if you need extra time to work.
9. Use your Porter Planner and Google Classroom to keep track of when projects are due.
10. Use Infinite Campus to check your grades. Check for any Teacher Comments (specifically any missing assignments) and follow through with the instructions that are given in order to receive full credit.
11. Apply yourself fully in order to maximize learning. Give your best effort

## **Assessment**

Evaluating classroom behavior, photography assignments, reading assignments, quizzes, and final exams will determine grades.

## **Projects**

All projects will be assessed with the following criteria listed below and other specific criteria pertaining to that project. These additional criteria will be stressed when talking about the projects.

1. Focus on directions and project objectives
2. Effective use of the visual elements and principles of art, design and/or photography
3. Skills and use of techniques with film cameras, darkroom techniques, digital cameras, computers, software, and other materials used in the classroom.
4. Assignment Criteria/Objectives, Visual Elements & Principles, Engagement/Effort/Persistence, Craftsmanship/Technique, Creativity/Originality/Persistence

## **Grade Scale**

A - Advanced: Thoroughly achieved this standard, meeting or possibly exceeding the expectation.

B - Proficient: Met the requirement at the expected level.

C - Approaching: Partially meets, some parts incomplete, missing or lacking detail.

D - Minimal: Minimally meets, lacking completion, missing elements, didn't follow directions

F - Does Not Meet: Didn't do the assignment, didn't turn in, didn't follow directions. No evidence of meeting the standard.

100% - 90% = A

89% - 80% = B

79% - 70% = C

69% - 60% = D

59% - 0% = F

## **Grade Breakdown**

50% Classroom Photography Projects

20% Final Exam

10% Written Work

10% Participation

10% Quizzes

## **Classroom Rules**

1. Respect the teacher, substitute teachers, other students, and the equipment you are using in class. Remember that RESPECT is EARNED.
2. Cursing, or inappropriate language is NOT ALLOWED in class.
3. Phones are NOT ALLOWED to be used or visible in school. Any student with a phone out during class time will be asked to put it away. If the student refuses they will receive a referral and the device will be given to the Dean. There may be projects we do in class that do involve the use of our phones. I will let you know about these during the semester.
4. There is absolutely no food, candy, gum or drinks allowed in the class. Your 1st offense will result in a warning; a second will be a REFERRAL!

## **Classroom Procedures**

1. Each assignment will have a due date listed on Google Classroom. Please look at these and listen when we talk about due dates for projects.
2. Some assignments submitted through Google Classroom will be due on a specific day and time noted on Google Calendar and/or on our class website. Exceptions for late assignments can be made by the teacher for various reasons, extended absence, etc. that are approved by the school and will be made as needed



# Digital Photography

Ps Adobe Photoshop CC



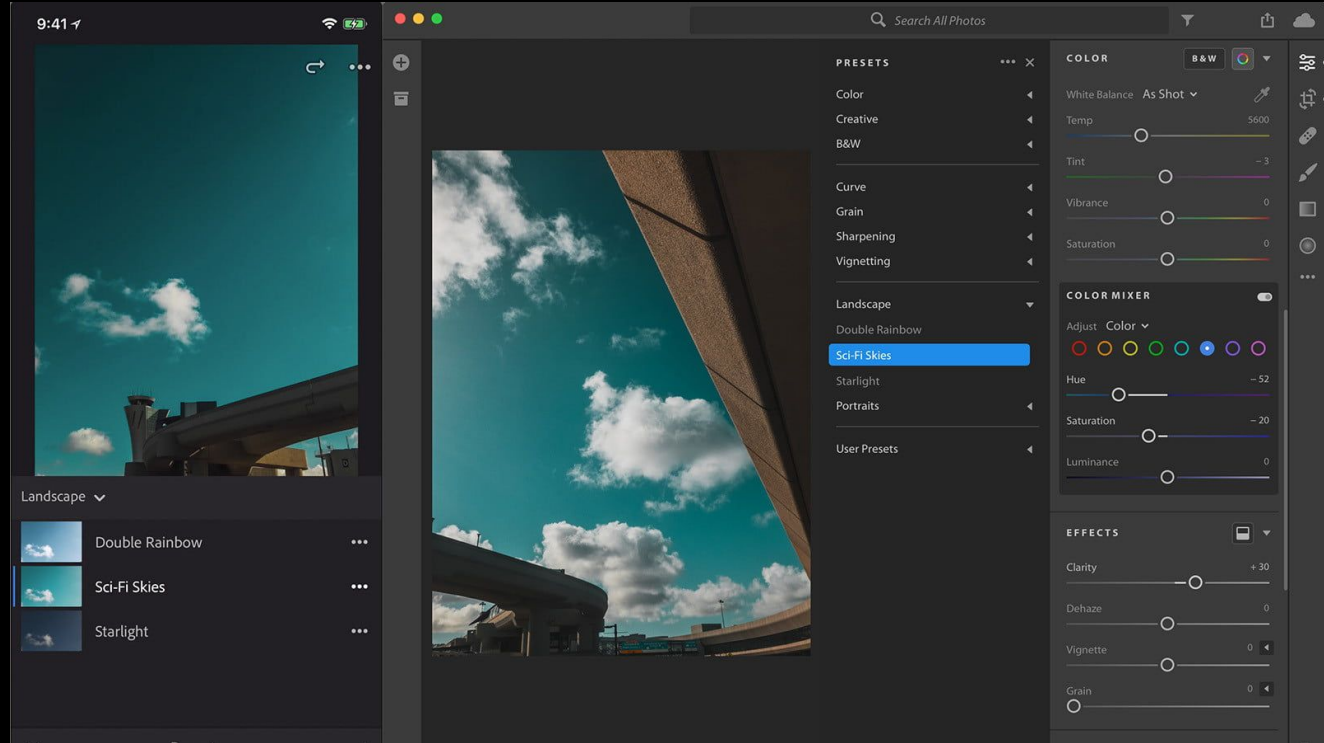


11:10 AM

... 22.0KB/s 4G LTE 67%



# Adobe Photoshop Lightroom



# Film Photography

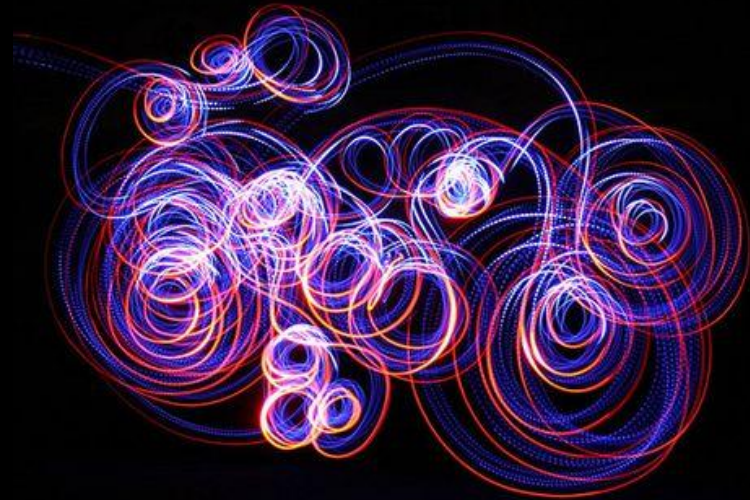


# Projects

















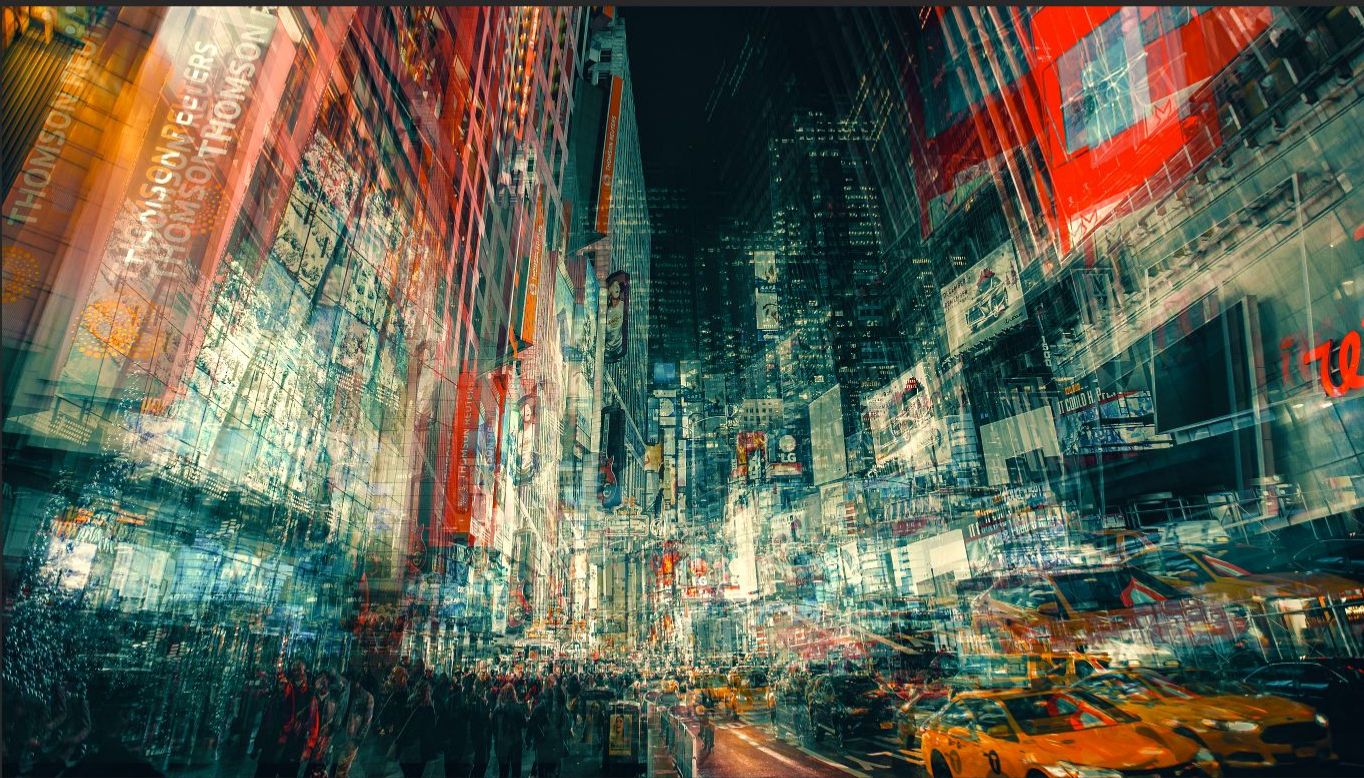












**Layers**

Kind: Normal Opacity: 100%

Lock: Fill: 100%

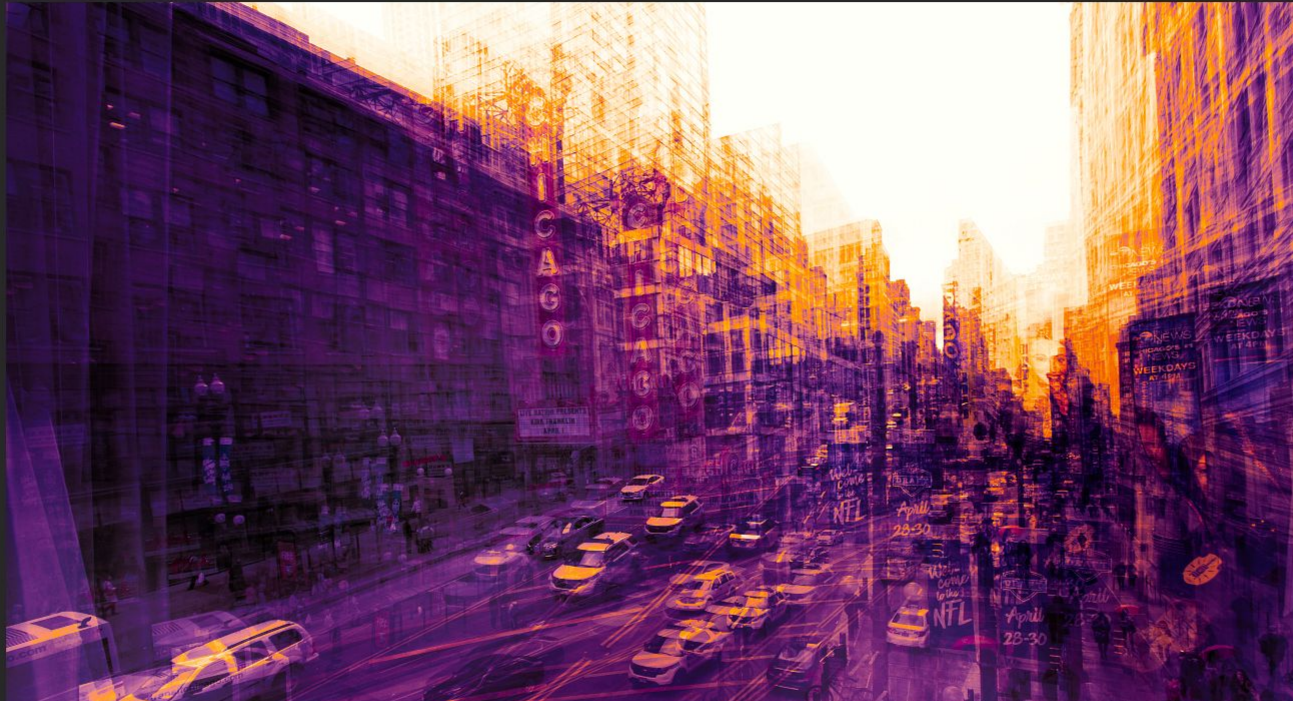
- Levels 1
- Vibrance 1
- Color Lookup 1
- merged layers
- Layer 1 copy 6
- Layer 1 copy 5
- Layer 1 copy 4
- Layer 1 copy 3
- Layer 1 copy 2
- Layer 1 copy
- Layer 1
- Background



File Layer Type Select Filter 3D View Window Help

🔍 🔍  Resize Windows to Fit  Zoom All Windows  Scrubby Zoom 100% Fit Screen Fill Screen

📄 @ 25% (Layer 2, RGB/8\*) × NewYork.psd @ 25% (Color Lookup 1, Layer Mask/8) ×



**Layers** [Close] [New Layer]

🔍 Kind [Dropdown] [Icons]

Normal [Dropdown] Opacity: 100% [Dropdown]

Lock: [Icons] Fill: 100% [Dropdown]

- [Pattern] dark effect
- [Pattern] dark effect
- [Pattern] Spotlight effect
- [Pattern] Spotlight effect
- [Pattern] Spotlight effect
- [Pattern] Spotlight effect
- [Link] [White] Vibrance 1
- [Link] [White] Color Lookup 1
- [Image] Layer 2
- [Link] [White] Gradient Map 1
- [Link] [White] Levels 1
- [Image] Layer 1
- [Image] \_MG\_4412.JPG
- [Image] \_MG\_4418.JPG
- [Image] \_MG\_4419.JPG
- [Image] \_MG\_4420.JPG
- [Image] \_MG\_4421.JPG



Layers

Q Kind

Normal Opacity: 100%

Lock: Fill: 100%

- Curves 3
- Curves 2
- Edge Effect Image
- Photo Burning
- Black & White 1
- Levels 1
- Curves 1
- Background

fx



Properties

Curves

Preset: Custom

RGB Auto

Input: Output:





